

TYPE G COLUMBUS DIN 15232

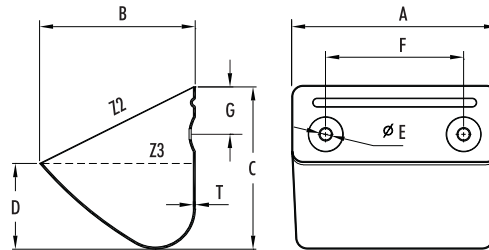


Agricultural Pressed Steel Bucket.

- > Supplied complete with standard recessed holes
- > Ideal for free flowing materials on medium speed elevators

PRESSED STEEL / STAINLESS STEEL

Agricultural



No.	A* (mm)	B* (mm)	C* (mm)	D* (mm)	T (mm)	(kg)	Capacity (Litres)		No.	Recessed Holes		
							Z2 (total)	Z3 (water)		E (Ø mm)	F (mm)	G (mm)

STANDARD RANGE												
G80	80	75	80	40	1.0	0.13	0.25	0.16	2	8.0	43	19
G90	90	80	85	45	1.0	0.16	0.33	0.22	2	8.0	46	19
G100	100	90	91	45	1.0	0.18	0.42	0.27	2	8.0	58	23
G110	110	95	95	50	1.0	0.21	0.51	0.33	2	8.0	64	26
G120	120	100	105	55	1.0	0.25	0.70	0.41	2	8.0	67	29
G130	130	105	110	58	1.0	0.30	0.81	0.49	2	8.0	78	32
G140	140	115	117	63	1.0	0.33	1.05	0.62	2	8.0	86	35
G150	150	125	123	66	1.0	0.36	1.21	0.75	2	8.0	87	33
G160/1.5	160	125	126	70	1.5	0.57	1.31	0.89	2	9.5	101	36
G160/2.0	160	125	126	70	2.0	0.76	1.31	0.89	2	9.5	101	35
G180/1.5	180	130	130	76	1.5	0.67	1.62	1.04	2	9.5	110	39
G180/2.0	180	130	130	76	2.0	0.89	1.62	1.04	2	9.5	110	39
G200/1.5	200	140	145	88	1.5	0.84	2.25	1.50	2	9.5	131	45
G200/2.0	200	140	145	88	2.0	1.12	2.25	1.50	2	9.5	131	45
G225/1.5	225	145	153	90	1.5	1.01	2.81	1.80	3	9.5	70	40
G225/2.0	225	145	153	90	2.0	1.30	2.81	1.80	3	9.5	70	40
G250/1.5	250	150	158	92	1.5	1.13	3.15	2.07	3	9.5	77	45
G250/2.0	250	150	158	92	2.0	1.46	3.15	2.07	3	9.5	77	45
G300/1.5	300	155	160	95	1.5	1.35	4.20	2.75	3	9.5	104	48
G300/2.0	300	155	160	95	2.0	1.74	4.20	2.75	3	9.5	104	48
G350/1.5	350	180	190	100	1.5	1.86	6.37	4.03	4	11.0	90	54
G350/2.0	350	180	190	100	2.0	2.35	6.37	4.03	4	11.0	90	54
G400/2.0	400	200	212	112	2.0	3.00	8.17	5.32	4	11.0	100	80
G400/2.5	400	200	212	112	2.5	3.75	8.17	5.32	4	11.0	100	80
G500	500	224	236	125	3.0	6.00	14.50	9.50	5	14.0	100	90

SPECIAL RANGE												
GS350-230	359	232	236	108	2.5	3.85	9.97	5.22	4	12.0	80	90
GS350-240	359	244	236	125	2.5	3.91	10.25	6.80	4	12.0	80	90
GS500/1 HDP	500	226	247	117	9.0	2.35	13.35	6.90				
GS500HDP	500	240	253	117	8.5	2.44	14.58	7.98				

* Note: Dimensions for G Type measured internally in accordance with DIN Norm

Free Engineering Design Service - contact 4B or visit: www.go4b.com