

BOLT 'N' GO Drop Forged Conveyor Chain

**NEW
PRODUCT**

4B Braime is pleased to announce the launch of the new revolutionary Bolt 'N' Go drop forged chain system.

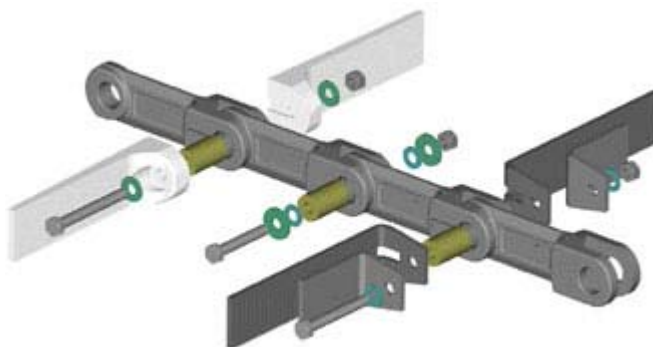
The traditional system of drop forged chain uses welded flights, pins and circlips, that require the removal of the complete chain from the conveyor for repairs / change out of parts.

The new Bolt 'N' Go system is a very flexible system of high strength hollow pins, heavy duty washers and nylock nuts, which enable bolts to pass through to connect the links together and attach flights.

The Bolt 'N' Go system's advantages:

- No more welding of flights
- No need to remove chain from conveyor
- Reliable secured link, pin and flight
- Reduced maintenance cost and down time
- Steel or plastic flights

U.S. Pat. 7,080,728
Other Patents Pending



2007 Trade Show Schedule

Powtech Booth # 10-519	27-29 March, 2007	Nuremberg, Germany
VICTAM Booth # 7D078	8-10 May, 2007	Utrecht, Netherlands
Hillhead Booth # P97	26-28 June, 2007	Buxton/Derbyshire, UK

Employee Profile

Dave Wolstencroft
 BEng, CEng, MIEE
Technical Sales Manager



My name is Dave Wolstencroft and I am a chartered engineer and hold an honours degree in Engineering. I have worked within the 4B Braime Group since 1995, in which I have just recently returned from working at the US division in Illinois for the last three years.

Although engineering is my background, I have been 'bitten by the Sales Bug' and love working in a technical sales role.

In my spare time I am a season ticket holder of my beloved Liverpool Football Club, where I spend much of my time. I also enjoy cooking and trying out new recipes on friends and family.

I am married and have two lovely young children, a boy and a girl.

Want to book an appointment with a sales engineer ?

For a presentation of our range or for an individual consultation, please contact our office:

email:
 4b-uk@go4b.com

Tel:
 (+44)- (0)113 246 1800

4B Hotbus System T500

Continuous Bearing Temperature & Belt Misalignment Monitoring System

The new HotBus™ Digital Serial Communication System from 4B offers customers a much simpler and more cost effective approach to continuous bearing temperature monitoring.

With up to 256 bearing sensors on a single twisted pair cable, installation is much easier and maintenance free. The system allows complete control with user adjustable relative ambient and absolute trip points for each sensor. The 4B HotBus system can also be used for other applications by connecting other types of sensors.

HotBus Control Units can be stand alone or connected to relay control units to provide automatic machine shutdown. Ethernet, Modbus and Device Net Gateways are also available for connection to existing networks.

Software is provided for system test, system status and uploading of meaningful sensor names and logging / trending bearing temperatures and alarms.

The 4B HotBus system can also accept TouchSwitch and other switched contact inputs on the same network.

Features:

- Max Sensors: 256 sensors on one twisted pair Network
- High Speed: 4 second scan time on 256-sensor network
- Versatile: Connects up to 4 relay control units R500 (16 relays per box, i.e. 64 relays)
- Approvals: ATEX zone 21 & 22 and CE



Remote Auto-Set

Remote Radio-Frequency Level Indicator

ATEX-approved for zones 20, 21 & 22

The Remote Auto-Set is a radio-frequency level indicator that allows single point level detection of most liquids and bulk granular materials such as powders, grain, sugar, cement etc...

The remote version allows the programming and monitoring to be achieved at a distance of up to 100 metres between the control module and the transponder.

The Remote version is recommended for situations where

- the level probe is not easily accessible
- regular recalibration is necessary
i.e. for various products used in feeders etc
- the level indicator is exposed to vibration & possible impact
- the product is at temperatures up to 250°C

The control module ATSR1V0A has a display and is simply programmed using push-buttons and switches.

Like the standard version, it has a power shield function that enables it to automatically compensate for material build-up on the probe.

Features:

- Compensates for product build-up on the probe
- Available with different probe types
- Display on the electronic module to aid calibration/ operation
- Dual Supply Voltage: 110/230 VAC
- Automatic or manual calibration
- Time delay adjustable between 0 and 128 seconds
- Fail-safe switch for high/low level
- Output relay with normally open & normally closed contacts
- User-adjustable sensitivity
- Up to 100M distance between control module and transponder using standard 2 core screened cable

Dear reader,

These are just some highlights of our extensive range. To view our full range or our technical datasheets, please visit our new website at: www.go4b.com.



Or book an appointment with a representative by calling: 0113-246 1800



**NEW
PRODUCT**



MLT (Minet Lacing Technology) - THE FACTS

Some of our customers have expressed confusion regarding former **GORO** and **Jackson** belt fasteners, and how they relate to **MLT (Minet Lacing Technology)**. We hope the following information will help to explain the situation as it exists today.

Minet (France) bought the assets of the liquidated GORO company in 2005 and continues to make the full GORO range of fasteners in the former GORO factory in Ales, France, but now under the **MLT (Minet Lacing Technology)** trading name.

The trade name GORO and their Patented Products are the **exclusive property** of MLT (Minet in France). All MLT fasteners and tools are distributed exclusively in the UK by 4B Braime Elevator Components Ltd.

Any copies of former GORO products - **specifically the RV6 and G2001, G2002 & G2003** being distributed in the UK, under any other brand name other than that of MLT, are an infringement of the Patents owned by MLT.



When **Jackson Fasteners** were bought by Flexco, some former Jackson customers were led to believe that the Minet fasteners previously sold by Jackson were no longer available. We are pleased to advise that the following fasteners are **still made by MLT**, and are available through 4B Braime with these new references:

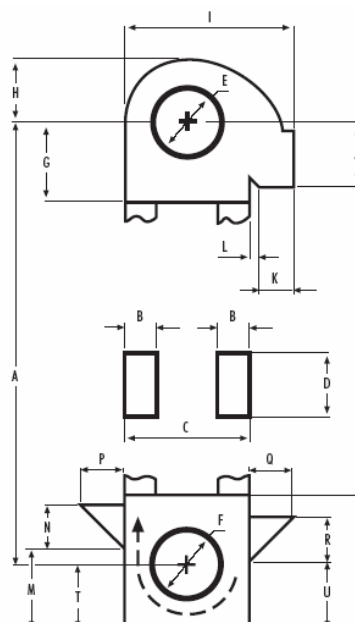
- Jackson 2A = MLT Airport**
- Jackson 3A = MLT Minibelt**
- Jackson 4A = MLT Prestol**
- Jackson 5A = MLT Miniprestol**

FREE Engineering Design Service

Our Engineering-Service will help you to increase the capacity of your elevator by calculating the optimal combination of components !

Contact us now
or visit us on:

www.go4b.com



Want to be added to the 4B Braime Newsletter Mailing List?

If you did not receive this publication by mail, send your name, company name, telephone number and address to:

4B BRAIME ELEVATOR COMPONENTS
Hunslet Road
Leeds. LS10 1JZ
ENGLAND

or email:
sbioc@go4b.com