



4B Braime now selling MINET belt fasteners

4B Braime has signed an agreement securing itself the distribution rights for MINET conveyor belt fasteners.

With the introduction of MINET Lacing Technology (MLT) fasteners into our range, we aim to complement and reinforce our position as a single source supplier of material handling components, offering our customers an even better allround-service.

MLT-MINET products, which supersede GORO, are backed by more than 50 years experience in the field of lacing systems, vulcanizing presses and special belts. The MLT-MINET range includes some very innovative products, which meet exactly the requirements of the mining industry, agriculture, food processing industry, heat belt transportation etc.

MLT-MINET belt fasteners have been designed with the aim to provide a higher security, a longer lifetime for conveyor belts, and easier installation.

The range includes:

Heavy duty fasteners:

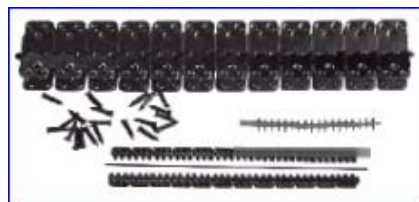
Super-Screw lacing,
RV6 fasteners,
G2001/2/3 fasteners,
Rivet fasteners,
MS fasteners

Light Duty fasteners:

Flexible PVC- & PU lacing,
Self-lock fasteners,
MR fasteners,
Rivet fasteners

Fasteners for agricultural use / round-balers

**For a complete listing of fasteners, tools and accessories,
see our website: www.go4b.com**



**Want to book an
appointment with our
sales representative ?**

**For a presentation of our belt
fasteners range, please contact
Paul Haywood:**

email:

paul@hooknet.com

Tel:

(+44)-
(0)1535-630369

Or (+44)

(0)113 246 1800



SJ Bucket and Steel Web Belt

A proven high-performance solution for the heavy industry

The 4B SJ Bucket and Steel Web Belt System is 4B's answer to the industry's demand for larger capacities, more efficient and cost effective elevators to handle industrial products such as cement.

4B has successfully used this system, comprised of the STARCO JUMBO Industrial Duty Elevator Bucket and Steel Web Belt, worldwide over the last 10 years, mainly in the cement industry.

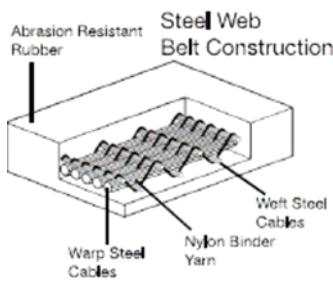
However, this system can also be used in other industrial applications such as:

-Coal - Gypsum
-Aggregates - Ores

4B can offer an integrated system of Steel Web Belting, SJ Pressed Steel Buckets and FREE engineering for elevator designs with compact industrial elevators.

The SJ system replaces the need for traditional Chain and Bucket Elevators, and also replaces very large cumbersome belt with very slow moving fabricated (and expensive) elevator buckets.

The SJ and Steel Web Belt System uses 1 to 4 rows of closely spaced heavy duty pressed steel buckets 5/32" thick (abrasion resistant wear bands are available). This system can be used both for new elevators and for existing elevators using chain or belting, which can be upgraded with the use of our free engineering service.



The Advantages of using the SJ System & Steel Web Belt:

- Savings of up to 33% on component costs
- Heavy duty but lighter weight system
- Taller elevators are possible (up to 450ft/150m)
- Longer life than chain & sprockets
- Low maintenance costs
- Higher belt speeds are possible
- Closer bucket spacing
- High capacity and efficiency

Free Design Service & Technical Support from our team of specialist engineers

Elevator bucket bolts now manufactured by 4B!



"Ref 70"



Easifit Bolts
Large Oval Washers



Fang Bolts
Euro Bolts

In our range:

4B Conveyor Belt Switch (CBS) now available

The CBS is a mechanical switch which detects belt misalignment on conveyors. It reacts to the tilt caused by the misaligned belt. The CBS comes with 2 outputs - 15° and 30° - which trigger a first step alarm and a stop. The sensors are connected to a central monitoring unit, CB2V0A, which can control four sensors and triggers an alarm or stop signal and also provides a time delay.

The cylinders in contact with the belt are available in different options:

- Mounted on a stainless steel bearing
→ stainless steel 304 or nylon cylinder
- Mounted on shaft
→ nylon cylinder

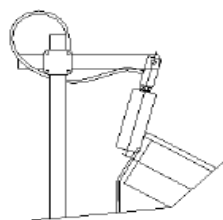
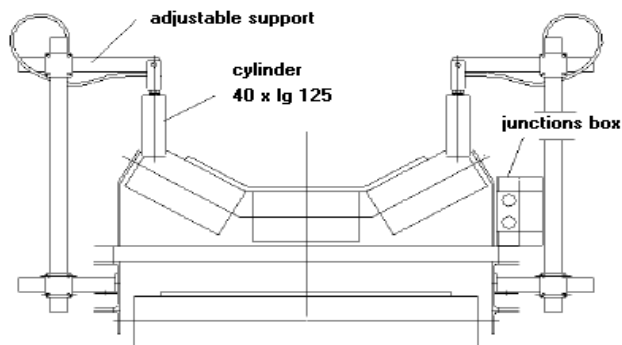


ATEX certified zone 20
Ex II 1D Ex tD A20 IP 66 T125°C

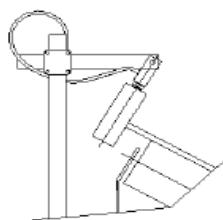
The adjustable support is in stainless steel and allows a simple installation and adjustment of the sensors.

The advantage of this system lies in the fact that the force of contact between the cylinder and the belt is limited to the weight of the cylinder itself. This means that the cylinder is not damaged / cut by the belt even if they are in contact for a certain length of time.

The sensors are usually installed in pairs on each side of the machine.



misalignment signal 1 15°



misalignment signal 2 30°

NEW
PRODUCT



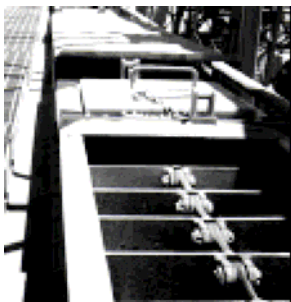
What can we use 4B Chains for ?

4B forged chains can be used for almost any bulk material conveying application. Steel flights of various designs welded to the links enable many varying material types to be conveyed.

We have various sizes in stock; 102, 142NA, 142HA & HAD, 216, 260mm pitch forged chain. These are supplied as case hardened. 4B also supplies round link and other fabricated chains.



The main advantage of forged chains over other types of chain is their durability. This is due to the fact that they don't stretch like other chains; they are abrasion resistant (high hardness level – 59RC with a good level of ductility in the core to eliminate chain brittleness.



The main industries that 4B chains have been used in are the agricultural, coal, cement, wood chips, ash handling, sugar, animal feeds, aggregates, gypsum, etc. 4B chains have been used to transport these materials in conveyors of varying lengths, angles and capacities, including high capacity conveyors and high heat applications.

We can advise on the best design and chain selection for your particular application.

**Free Design Service & Technical Support
from our team of specialist engineers**



Employee Profile

Belinda Smits
Customer Service Manager



Hi, my name is Belinda Smits. I started working for Braime last June, I am really enjoying getting to know all the staff and our customers.

Before coming to Braime I worked in banking and accounts for 10 years, I most enjoyed being part of the team that floated Alliance and Leicester Plc on the stock market.

In my spare time I dance in a traditional Latvian dance group. I have been dancing with them for 17 years, we do between 3 to 10 performances a year. I also enjoy visiting different countries where I can try different types of food so that when I come home I can experiment, as cooking is another hobby.

Want to be added to the 4B Braime Newsletter Mailing List?

If you did not receive this publication by mail, send your name, company name, telephone number and address to:

**4B BRAIME ELEVATOR
COMPONENTS**
Hunslet Road
Leeds. LS10 1JZ
ENGLAND

or email: sbioc@braime.co.uk