

## Radio-Frequency Level Indicator

ATEX-approved for zones 20,21 et 22

### DESCRIPTION

The **AUTO-SET** is a radio-frequency level indicator which allows to detect low, medium and high levels on almost all liquid and granular materials, such as powders, grain, sugar, etc...

The **AUTOSET** has a display and can be set up using simple push-buttons and switches to save the settings.

It has a power shield function that enables it to automatically compensate for material build-up on the probe.

### CHARACTERISTICS

- Power shield to minimise the affect of material adhering
- Available with 5 probes up to 10 meters.
- Display unit
- IP 65
- Supply 110/230 VAC / 24DC.
- Output contact
- Set-up by push-button.
- Timer delay 0 to 128 seconds variable
- Button fail-safe high/low level
- Sensitivity adjustable by the user

### OPTIONS

- Stainless steel version version for the food and pharmaceutical industries: ATS6V0A
- ATEX-extended version: ATS6V0A-300
- Remote version for applications on vibrating elements or high temperatures: ATSR1
- Extra flat / compact version: ATS6V0A-FP

Detailed specification, wiring diagrams and installation/operating instructions available immediately upon request.



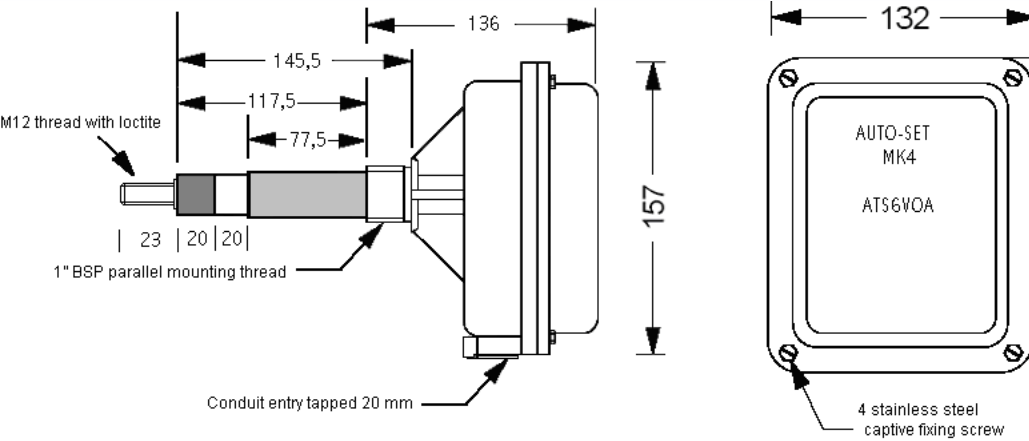
**ATS6V0A**



**ATEX-approved**  
**Ex II 1D T100°C-IP 65-ZONE 20**

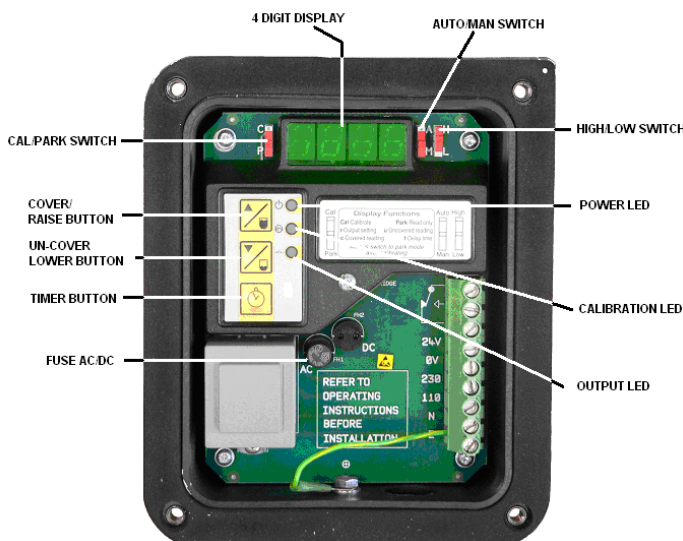
**CSA approved versions available**

Please refer to instruction manual for correct installation.  
Information subject to change or correction. May 2010

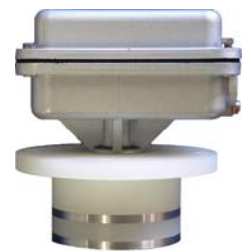


Probes range from 100mm to 1880 mm, with cable up to 10 meters and more

Approvals	Ex II 1D T100°C
Supply	110 / 230 V AC 50/60 Hz or 24 Vdc
Output	2,5 VA
Enclosure	Polyamide 66
IK	08
Protection	IP 65
Mounting	par pas 1" BSP parallèle
Switch high/low	preferred security position ( high or low level )
Fuse	5 Amps
Cable entry	min. 1mm <sup>2</sup> - max. 4 mm <sup>2</sup>
Operating temperature	-20°C to +50°C
Humidity	90%RH
Output	S.P.C.O contacts rated at 2,5A 240 V non-inductive
Time delay	0-128 seconds variable (to prevent wrong signals in case of dirt build-up)



Auto-set FP compact version



Auto-set extended version monitors through walls up to 300 mm thick



Please refer to instruction manual for correct installation. Information subject to change or correction. May 2010