

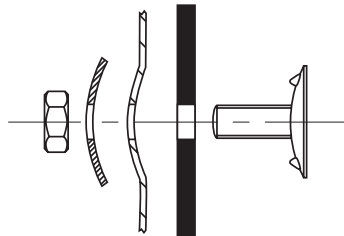


Euro Bolt & Domed / Flat Washer

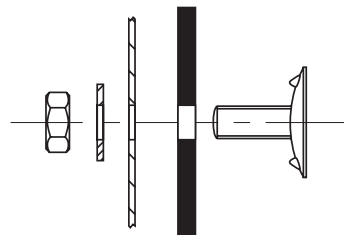
DIN 15237

STEEL/STAINLESS STEEL 304

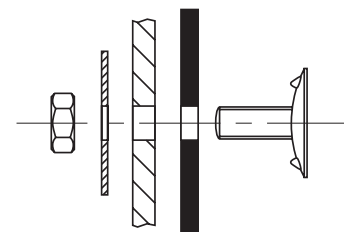
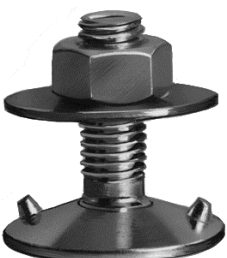
- Actual min core hardness 90-95 Rockwell B
- ISO grade 5.8 (exceeds DIN)
- Large bolt head diameter
- Fully threaded
- Zinc plated as standard or stainless
- Bolt hex nut small & small washer boxed/100 or bolt only bulk packed



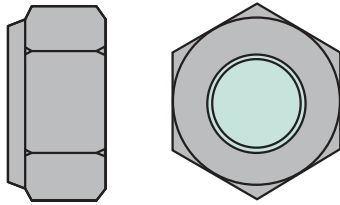
For steel buckets with recessed holes use:
Bolt, hexagon nut and **large domed washer**



For steel buckets with plain holes use:
Bolt, hexagon nut and **small flat washer**



For plastic buckets use:
Bolt, hexagon nut and **large flat washer**



**Free Design Service &
Technical Support from our
team of specialist engineers**

Option: Nylon insert self-locking nut for additional security (DIN 985)

SPECIFICATION Bolt, Hex nut, small washer (boxed/100) – Kg/100 Overall bolt length

	Head Ø	Max torque	16	20	22	25	30	35	40	45	50	60	70
Ref.		Nm	(mm)	(mm)	(mm)	(mm)	(mm)	(mm)	(mm)	(mm)	(mm)	(mm)	(mm)
M6	21	8	-	1.29	1.32	1.36	1.44	-	-	-	-	-	-
M7	23	13	1.7	1.78	1.85	1.92	2.06	2.2	-	-	-	-	-
M8	30	20	-	2.79	-	2.97	3.12	3.25	3.42	3.6	3.91	-	-
M10	35	35	-	-	-	5.22	5.33	5.44	5.8	6.15	6.57	-	-
M12	42	70	-	-	-	-	-	8.6	8.78	9.15	9.52	10.26	11.32

Ref.	Domed washer kg/100	Large flat washer kg/100	Nylon insert lock nut kg/100
M6	0.55	0.6	0.32
M7	0.6	-	0.35
M8	0.92	0.6	0.61
M10	1.88	0.72	1.34
M12	2.99	0.85	1.9

Bolts only (bulk packed) - kg/100

Ref.	16 (mm)	20 (mm)	22 (mm)	25 (mm)	30 (mm)	35 (mm)	40 (mm)	45 (mm)	50 (mm)	60 (mm)	70 (mm)	Qty
M6	-	0.97	0.99	1.04	1.07	-	-	-	-	-	-	2000
M7	1.27	1.34	1.42	1.47	1.61	1.75	-	-	-	-	-	1500
M8	-	2.17	2.21	2.26**	2.46**	2.59**	2.73	2.86	2.98	-	-	1000
M10	-	-	-	3.76	3.99	4.20**	4.45**	4.74	5.03	-	-	500
M12	-	-	-	-	-	6.35	6.68	7.07	7.47	8.30*	9.26*	500

*Supplied in bags of 250

**Also available in boxes of 100

**4B BRAIME ELEVATOR
COMPONENTS**
Hunslet Road
Leeds, LS10 1JZ
ENGLAND
Tel: +44 (0) 113 246 1800
Fax: +44 (0) 113 243 5021
elevators@braime.co.uk

**4B COMPONENTS
LIMITED**
729 Sabrina Drive
East Peoria, IL
61611-3578
USA
Tel: 309-698-5611
Fax: 309-698-5615
4b@go4b.com

4B SETEM SARL
9 Route de Corbie
80800 Lamotte Warfusée
FRANCE
Tel: 33 (0) 3 22 42 32 26
Fax: 33 (0) 3 22 42 37 33
SSETEM@aol.com

4B DEUTSCHLAND
9 Route de Corbie
80800 Lamotte Warfusée
FRANCE
Tel: 0700 22 42 40 91
Fax: 0700 22 42 37 33
4b-deutschland@go4b.com

4B SUDAMERICA S.A.
Arcos 2967
1429 Buenos Aires
ARGENTINA
Tel: (54) 114 702 2364
Fax: (54) 114 701 5075
4bsa@go4b.com

4B ASIA PACIFIC
12/6 Moo 7
Bang Na Trad
K.M. 17 Bangplee
Samutprakam, 10540
BANGKOK, THAILAND
Tel: 00 662 750 9602
Fax: 00 662 750 9601
braime_asiapacific
@hotmail.com