

High intensity - Rare Earth



Preface:

The Eclipse sieve magnet is unique as it offers a full stainless steel and lightweight design reducing the stress on the sieve that would normally be associated with other types.

The unit is positioned beneath the sieve screen (Fig A) allowing excellent separation to be achieved. Due to the high intensity of the magnetic field within the unit even sub-micron sized pieces of particles generated by the sieve screen wearing can be successfully attracted.

Cleaning:

Simply remove the top pan and screen from the sieve. The magnet can now be removed from the bottom pan and placed onto a non magnetic surface. Using the supplied cleaning tool simply scrape all attracted contamination to each rod end where it can be removed.

Suitable Products:

Dry powders, granulates & liquids etc.

Installation Location:

Post sieve screen.

Benefits:

Easy to clean ■ Reduces 'spark' risk ■ Meet audit requirements
Removes sub micron sized contaminants ■ Protect against
screen wear and failure ■ Rare Earth 9,000 Gauss ■
Static dissipative all metal construction ■

Category:

Secondary.

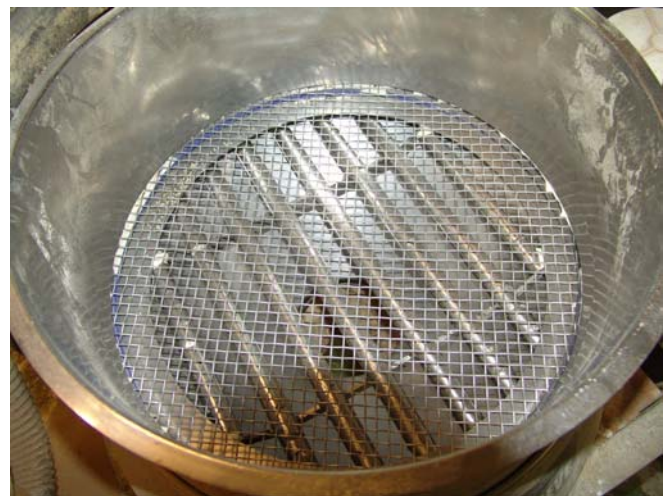
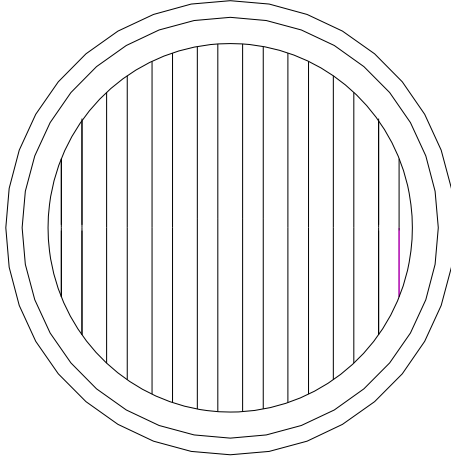


Fig. A



Technical Data:



Sizes:-

Part No	Dia A	Thickness B	No Rods	Weight	To be used in types
SMRF	545mm	32mm	8	14kgs	Russell Finex - Com
SMFG	545mm	32mm	8	14kgs	Farleygreene - Sievmaster

All dimensions in mm

Performance:-

Magnetic Performance:

7,000 Gauss - Standard Strength
 9,000 Gauss - High Strength
 11,000 Gauss - Super High Strength

Performance Reading:

On tube surface

Magnetic Material:

Rare Earth Neodymium Iron Boron

Magnet Grade:

N35 & N45 – Inspected & confirmed via hystergaph prior to use

Temperature:

-20° C/ + 90° C

*7,000 Gauss should be selected for bread flour applications to allow for permissible Iron Oxide.

Materials:-

Grid Frame:

316 Grade Stainless Steel

Tubing:

316 Grade Stainless Steel – Aerospace Quality

Other Parts:

316 Grade Stainless Steel

Surface Finish:

Polished to 0.6µm

Options:-

High temperature Samarium Cobalt magnetic material + 250° C

Magnet & screen metal detectable Silicon rubber seal – Dark blue, FDA Approved

Pharmaceutical specification

ATEX certified

